



ALUSTAR

Table of Contents



1

ABOUT US

2

HISTORY

3

PROJECT PROCESS

4

WHAT WE DO

5

FAÇADE DESIGN DEVELOPMENT

6

CASE STUDY - *ALGORITHM PROJECT*

7

DIFFERENT PROJECTS

About Us

Aluminum experts company, alustar is part of gpm group. gpm combines three decades of experience in different fields. with merging the industries' most talented professionals and opening the factory in africa, gpm has successfully gained a long list of high end projects in all sectors. this is due to the lower prices of manufacturing and higher levels of production and finished outcomes. our long list of clients in the wide region remain our advocates and we're always on a mission to exceed expectations and excel in the field we have mastered over the past 30 years

Alustar started in a family business in Lebanon as Daaboul and then moved to Kenya having all the experiences of the team and partners, under the name of Alustar

Alustar realized from day one that success, continuity and progress relies on delivering high quality outcome taking into consideration international standards and incorporating the latest innovations in the aluminum industry.

This prominent status was reached by evolving from the traditional and simple, and rising to the execution of large projects such as those of Curtain Wall, Structural Silicone, Composite panel, Skylights, Spider and Thermal Break Profiles. This was not achievable without incorporating the latest innovations, cooperation with creative architects and deploying advanced products, all backed up by our qualified staff.



Project Process

The following will highlight the scope of work and the steps involved in carrying out the aluminum and glazing works on the projects, to meet the highest levels of quality as per the company's objectives.



Preparation Works



Preparation of B.O.Q.
• Ordering the Material
• Site Measurements



Fabrication & Installation Works



Final Adjustments



Hand Over





What We Do

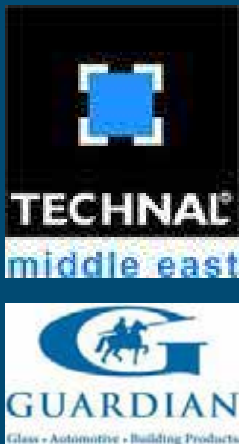
Alustar Boasts of well trained and experienced Engineers and Specialized workers, who form the appropriate administrative, production and installation staff to achieve the best quality end product and Guaranteed to artistically comply with the space created.

- **Doors, Windows & Shop Fronts**
- **Conventional & Structural Glazed Curtain Walls**
- **Frameless Structural Glass Walls (Spider system)**
- **Aluminum Composite Panels Cladding (Alucobond - Reynobond)**
- **Natural Composite wood Cladding , HPL (Prodema - Parklex)**
- **Ventilated Ceramic Façade, Terracotta (Favemanc Spain)**
- **Skylights, Vaults, Domes, Verandas**
- **Louvers & Sunshades**
- **Rolling Shutters, Venetian Blinds, Jalousies**
- **Handrails & Balustrades / Aluminum and Free standings**
- **Automatic & Revolving Doors**

Approved Fabricators & Applicators of:

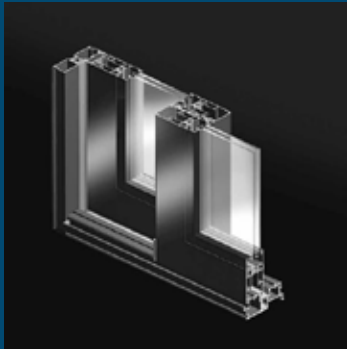


Main Suppliers



What We Do

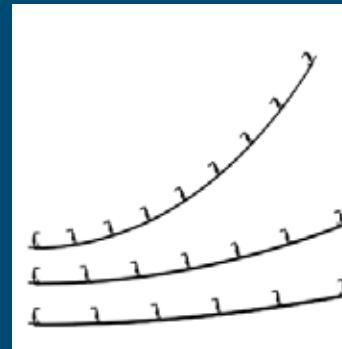
Showing some examples of our products



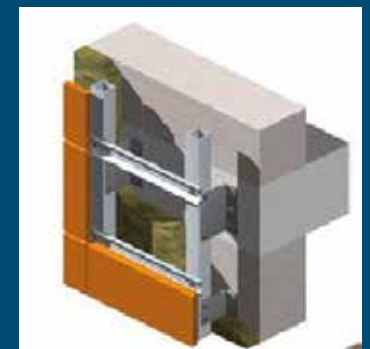
GALENE
Panoramic Sliding Window



GEODE
Curtain Wall



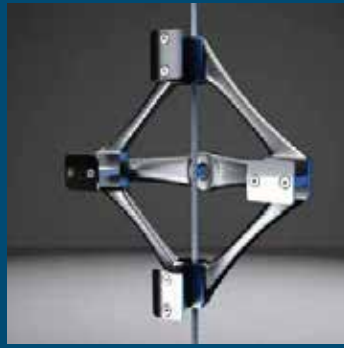
PARKLEX
Façade Cladding



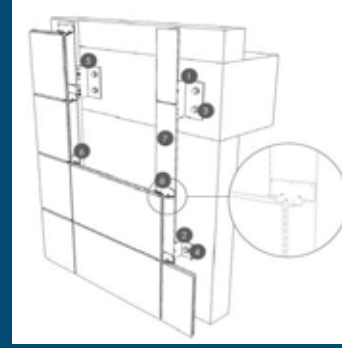
FAVETON
Ventilated Facade



SOLEAL
Minimal 55mm



OXIDAL
Spider System



FAVEMANEC
Ventilated Façade



TOPAZE
Contemporary Sliding

What We Do

Showing some actual examples of our products

SLIDING DOOR



SOLEAL



LUMEAL XXL



What We Do

Showing some actual examples of our products

SLIDE UP DOOR



SOLEAL



GALENE GTI



What We Do

Showing some actual examples of our products

TEMPLE 16



SKYLIGHT



Spider System



What We Do

Showing some actual examples of our products

Cladding



PERGOLA



PERGOLA



Façade Design Development

Alustar not only execute the given information, but also develop the facade design in order to suit its perfect final vision



BEFORE



AFTER



FINAL RESULT

Case Study – ALGORITHM PROJECT

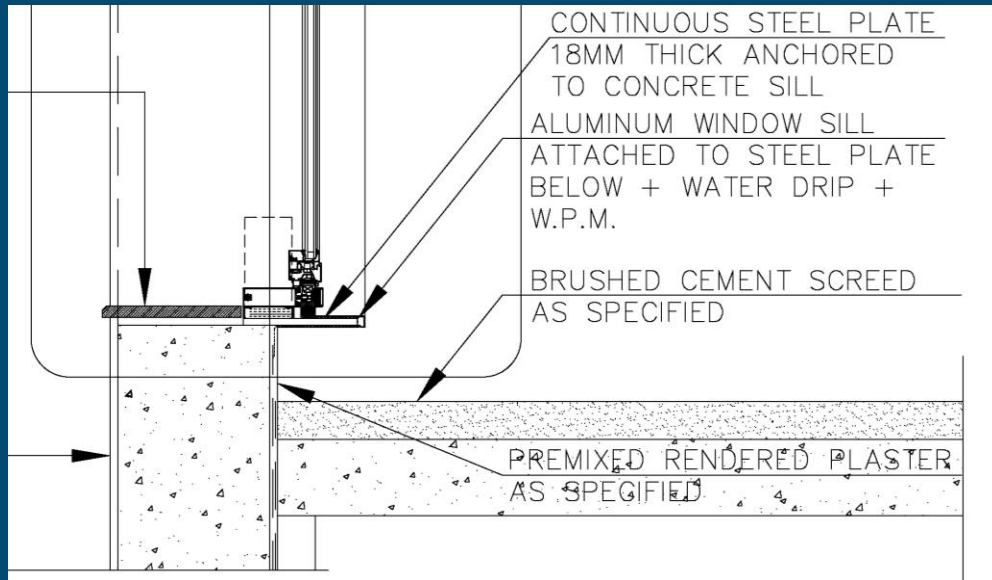


Perspective 1

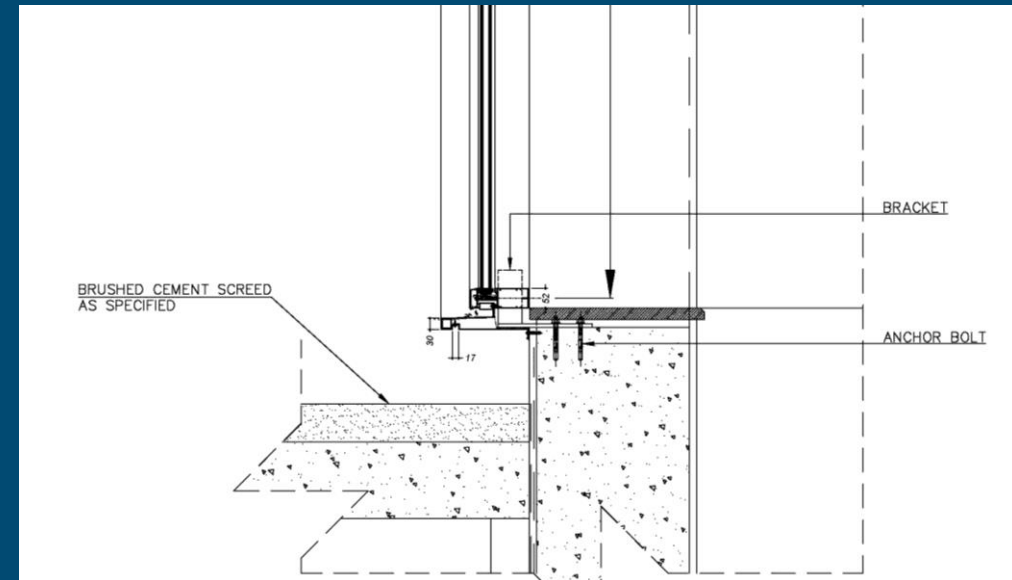


Perspective 2

Case Study – ALGORITHM PROJECT



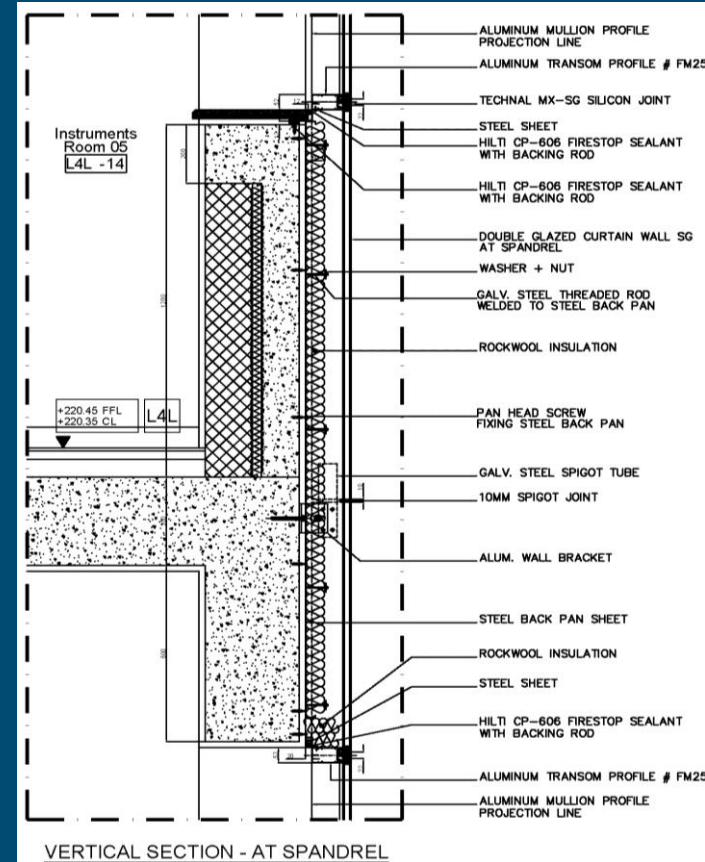
GIVEN DETAIL



DEVELOPED DETAIL

Case Study – ALGORITHM PROJECT

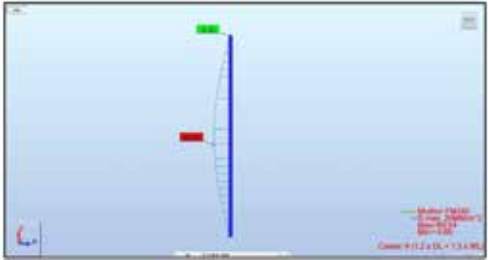
FIRE PROOF SPANDREL DETAIL



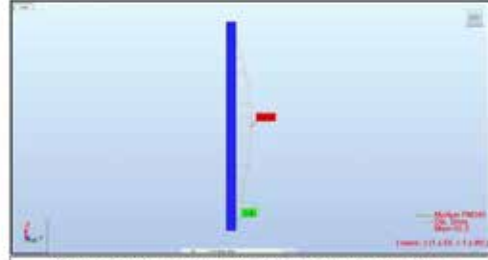
Case Study – ALGORITHM PROJECT

CALCULATION NOTE

ALUSTAR ALUSTAR-TECHNICAL AX Item 01-L2-Structural Calculation Report



Model View Showing the Maximum Stress Developed in Mullion Profile



Model View Showing the Maximum Deflection Developed in Mullion Profile

20 Sabud Engineering - TECHNICAL DEPARTMENT

ALUSTAR ALUSTAR-TECHNICAL AX Item 01-L2-Structural Calculation Report

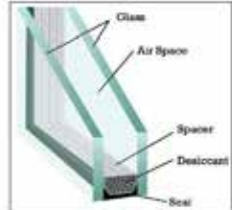
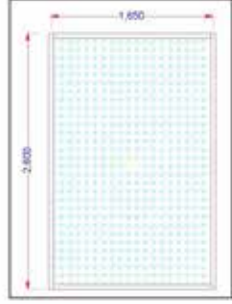
4.2 Glass Panels Study Using ASTM E1300-07

Load Resistance of Insulation Glass Panel

Glass Description:
 Outer Pane: 6mm Tempered Glass
 Glass-Air Space
 Inner Pane: 6mm Tempered Glass

$LR1 = NPL1 * GTF1 * LS1$
 $LR2 = NPL2 * GTF2 * LS2$

Where:
 LR1= Load Resistance of First Glass Panel
 NPL1= Non Factored Load of First Glass Panel
 GTF1= Glass Type Factor of First Glass Panel
 LS1= Load Share Factor of First Glass Panel
 LR2= Load Resistance of Second Glass Panel
 NPL2= Non Factored Load of Second Glass Panel
 GTF2= Glass Type Factor of Second Glass Panel
 LS2= Load Share Factor of Second Glass Panel

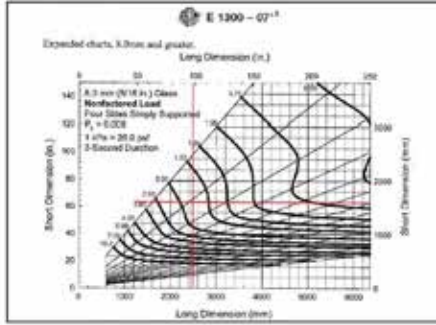
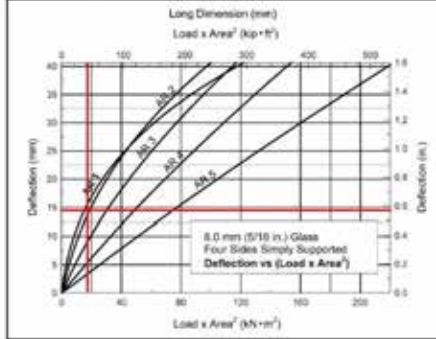



14 Sabud Engineering - TECHNICAL DEPARTMENT

ALUSTAR ALUSTAR-TECHNICAL AX Item 01-L2-Structural Calculation Report

E 1300 - 07

Excerpted charts, K, from and greater.

16 Sabud Engineering - TECHNICAL DEPARTMENT

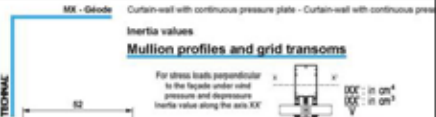
ALUSTAR ALUSTAR-TECHNICAL AX Item 01-L2-Structural Calculation Report

4.3 Analysis and Design of Vertical MX Mullion Profile FM254

Inertia values

Mullion profiles and grid transoms

For stress loads perpendicular to the facade under wind pressure and depression inertia value along the axis 'X'



Reference	Profile	Profile section (mm²)	Profile inertia with reinforcement (mm⁴)
FM160	6300-46	1056.8 cm² 114.7 cm³	4470.99 cm⁴ 336.45 cm³
FM207	6300-46	706.13 cm² 66.58 cm³	2000.87 cm⁴ 202.19 cm³
FM159	6305-46	599.52 cm² 58.97 cm³	1974.97 cm⁴ 191.41 cm³
FM256	6300-46	524.95 cm² 50.84 cm³	1269.42 cm⁴ 117.89 cm³
FM255	6310-46	423.44 cm² 44.84 cm³	964.11 cm⁴ 113.04 cm³
FM158	6300-46	298.32 cm² 37.58 cm³	898.97 cm⁴ 127.75 cm³
FM167	6300-46	191.89 cm² 27.87 cm³	528.96 cm⁴ 77.98 cm³
FM254	6305-46	152.89 cm² 24.89 cm³	347.02 cm⁴ 58.98 cm³
FM165	6310-46	118.29 cm² 20.35 cm³	310.42 cm⁴ 53.70 cm³
FM253	6300-46	93.13 cm² 17.80 cm³	196.07 cm⁴ 56.37 cm³
FM166	6305-46	81.65 cm² 13.41 cm³	154.59 cm⁴ 32.13 cm³
FM168	6300-46	30.89 cm² 8.84 cm³	84.26 cm⁴ 17.12 cm³
FM252	6310-46	22.43 cm² 6.83 cm³	36.71 cm⁴ 8.34 cm³
FM169	6300-46	12.11 cm² 4.53 cm³	56.46 cm⁴ 6.54 cm³
FM164	6300-46	2.24 cm² 1.28 cm³	

19 Sabud Engineering - TECHNICAL DEPARTMENT

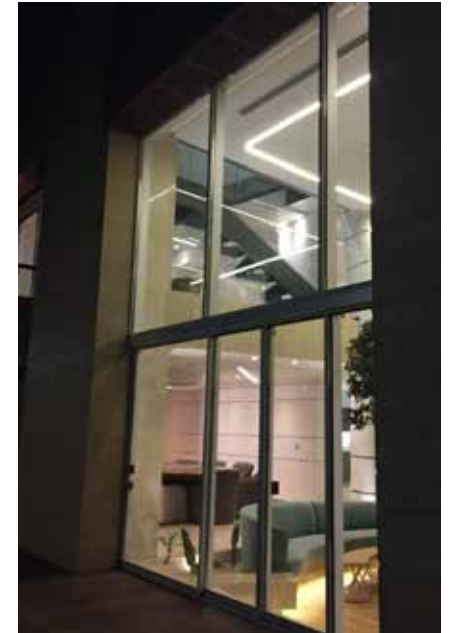
Different Projects

in Lebanon & Abroad



Different Projects

in Lebanon & Abroad



Different Projects

in Lebanon & Abroad



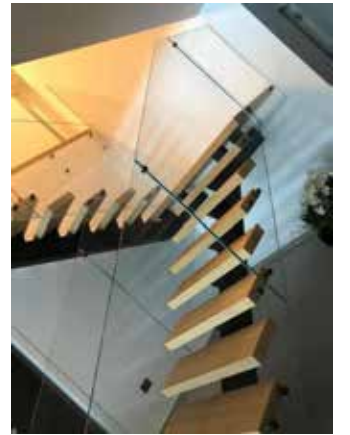
Different Projects

in Lebanon & Abroad



Different Projects

in Lebanon & Abroad



Different Projects

in Lebanon & Abroad



Different Projects

in Lebanon & Abroad

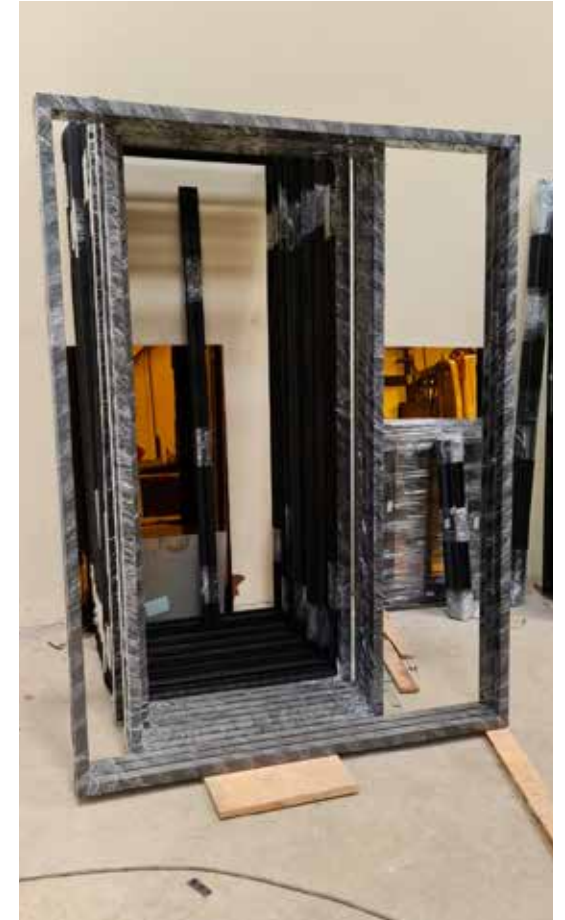


Different Projects

in Lebanon & Abroad



Our Factories in Nairobi





P.O.Box 14 - 00601 Nairobi, Kenya
+254 717 433 755 | +254 111 421 131
info@alustarkenya.com